

//RB08 MKII CHAIN CONTROL SYSTEM

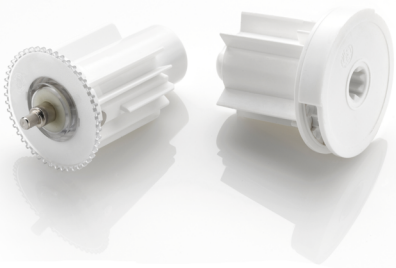
ROLLER SYSTEM BROCHURE



//CHAIN CONTROL SYSTEM

RB08 MKII

CHAIN WINDER



THE PROGRESSION TO THE RB08 MKII CHAIN CONTROL SYSTEM IS THE IMPLEMENTATION OF SEVERAL ADVANCEMENTS IN ACMEDA'S DEVELOPMENT PROGRAM, IMPROVING PERFORMANCE, FUNCTION AND APPEARANCE OF PREVIOUS MODELS.

EASY-LOCK™ BRACKET | VX



AUTO IDLER END



FEATURES

/ Enhanced Aesthetics

A refined chain winder ensuring a smoother aesthetical appearance.

/ Chain retention system with CHAIN SECURE

Improved chain security, avoiding accidental chain removal during operation.

/ Stronger Chain Guard

Strengthened chain cover preventing damage which may be caused by chain stopping devices.

/ Self Locating Installation Grooves

Chain winder featuring integrated grooves assisting to locate brackets in order to ensure an effortless installation.

/ Auto Idler with EXTEND functionality

Adjustable 7mm pin length extension, providing the option to correct inaccurately positioned brackets.

/ Tube Fitment

Increased mechanism stability providing a secure and seamless tube fitment.

/ Square Edge Bracket

New ergonomic bracket design with a square edge profile, reducing light appearance around idle & bracket.



©Copyright 1990-2012 All Rights Reserved
Acmeda [International Group] Acmeda, the
Acmeda Logo and all Trade Marks shown on the
catalogue are either registered Trademarks, or
Trademarks of Acmeda [International Group]
Incorporated in Australia, Taiwan and/or other
countries. FEB2012v1

HEAD OFFICE //

110 Northcorp Boulevard
Broadmeadows
VIC 3047 Australia

T +61 3 9355 0100
F +61 3 9355 0110

info@acmeda.com

EUROPE //

Via G. Deledda 10/A
20090 Opera (MI)
Italy

T +39 02 5760 3410
F +39 02 5760 1116

europe@acmeda.com